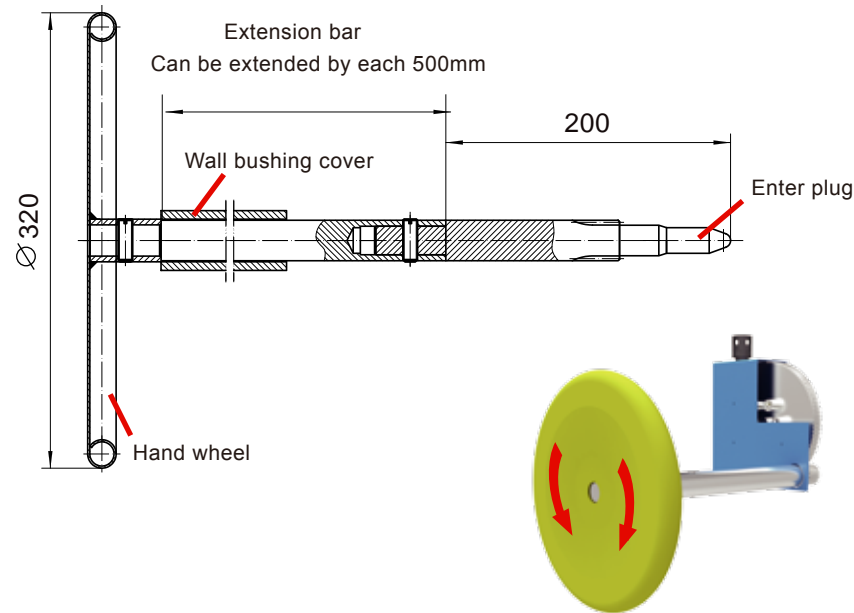


Hand Wheel Installation Instruction

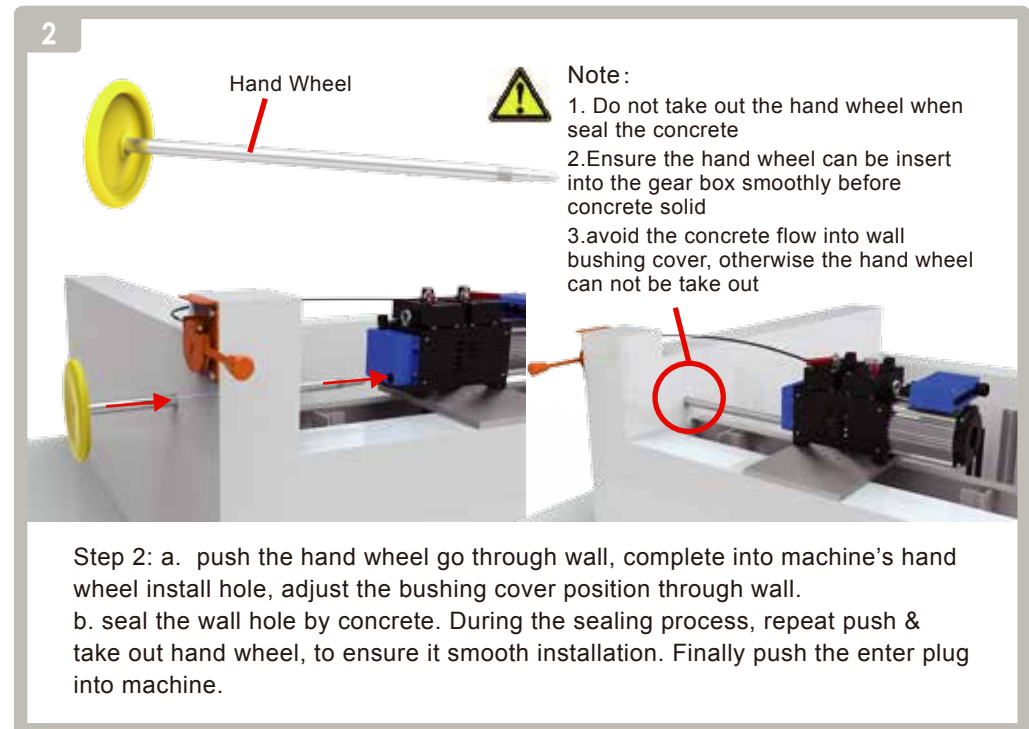
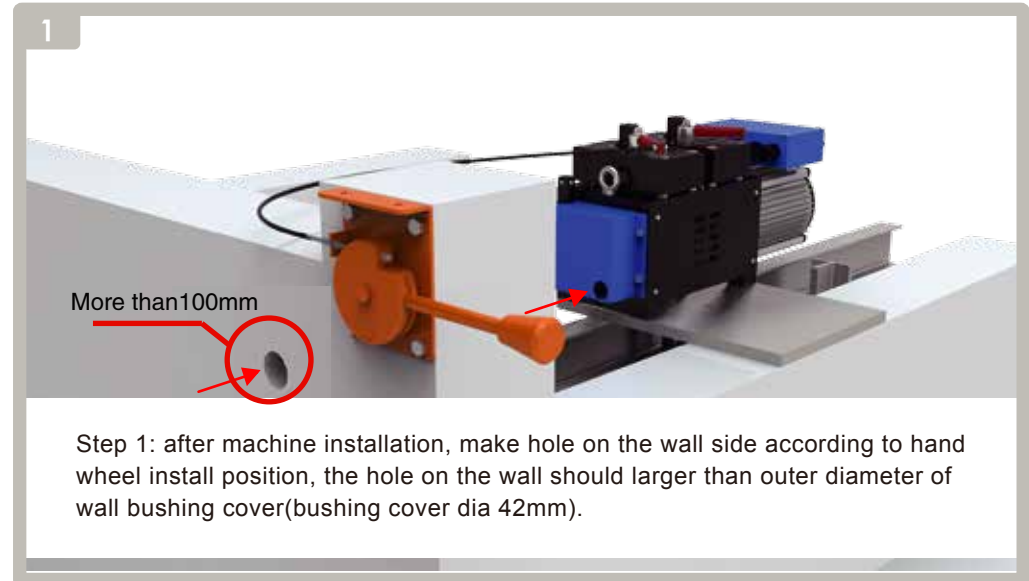
Hand Wheel XP - H11205

XP - H 112 05
 Series No Hand Wheel Center Height Extension Bar Length Code

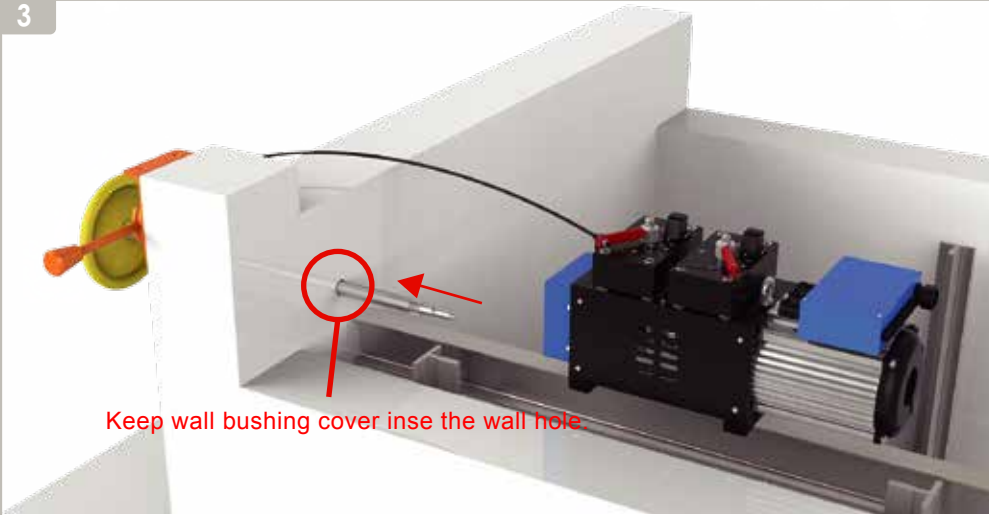


NO	Part No.	Machine center height (mm)	Extension bar length (mm)
1	XP-H11200	112	—
2	XP-H11205	112	50
3	XP-H11210	112	100
4	XP-H13200	132	—
5	XP-H13205	132	50
6	XP-H13210	132	100

Hand Wheel Mrl Installation



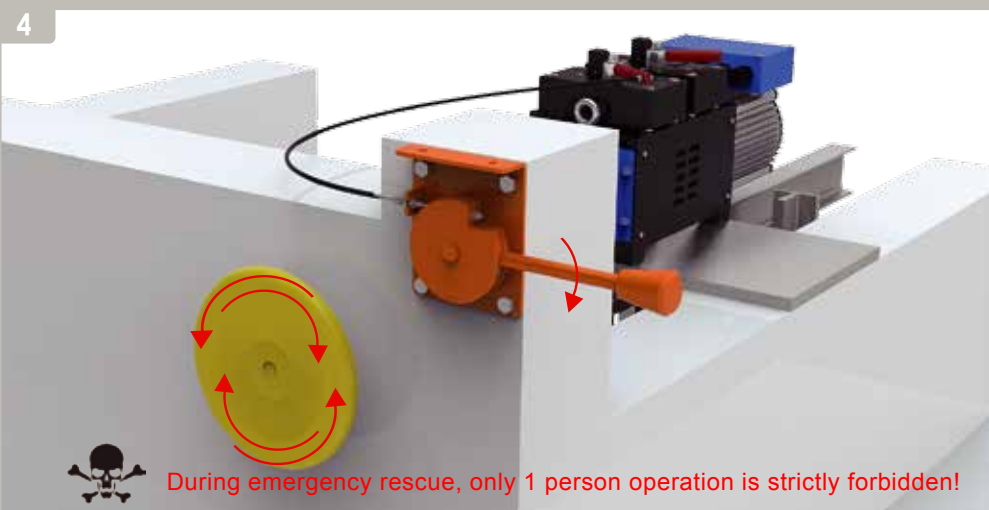
3




Keep wall bushing cover in the wall hole

Step 3: after the concrete solidification, take out the hand wheel.

4

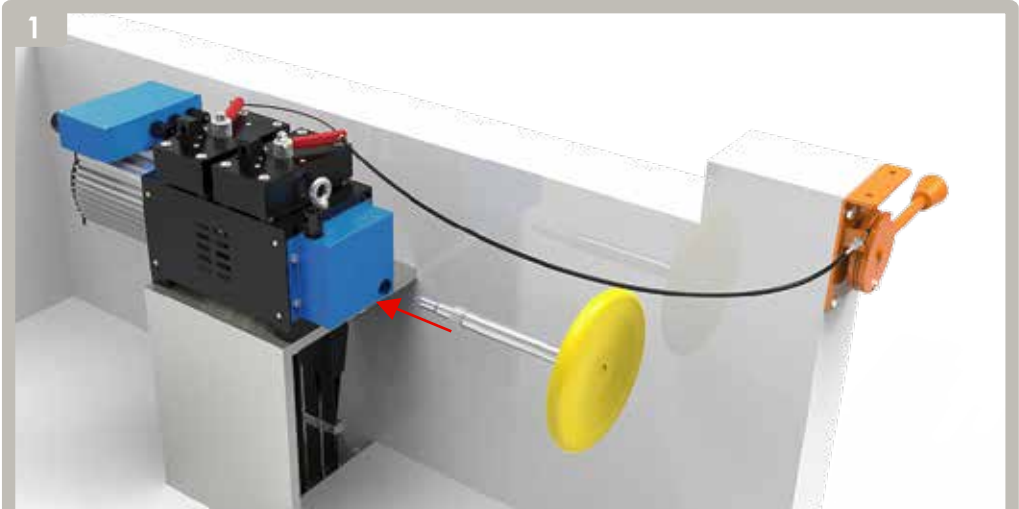


 During emergency rescue, only 1 person operation is strictly forbidden!

Step 4: In using, put the hand wheel into bushing cover, until the gear of hand wheel and machine completely in mesh. First, hold the hand wheel tightly, another person release the break. Then could clockwise or counter-clockwise the hand wheel, I operate the hand wheel to adjust machine.

Hand Wheel Installation


1



Step 1: put the hand wheel into machine, until the gear of hand wheel and machine completely in mesh.

2



 During emergency rescue, only 1 person operation is strictly forbidden!

Step 2: first hold the hand wheel tightly by both hands, another person release the break. Then could clockwise or counter-clockwise the hand wheel, operate the hand wheel to adjust machine.