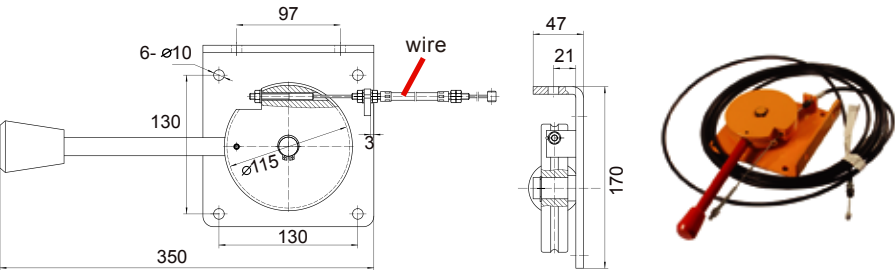


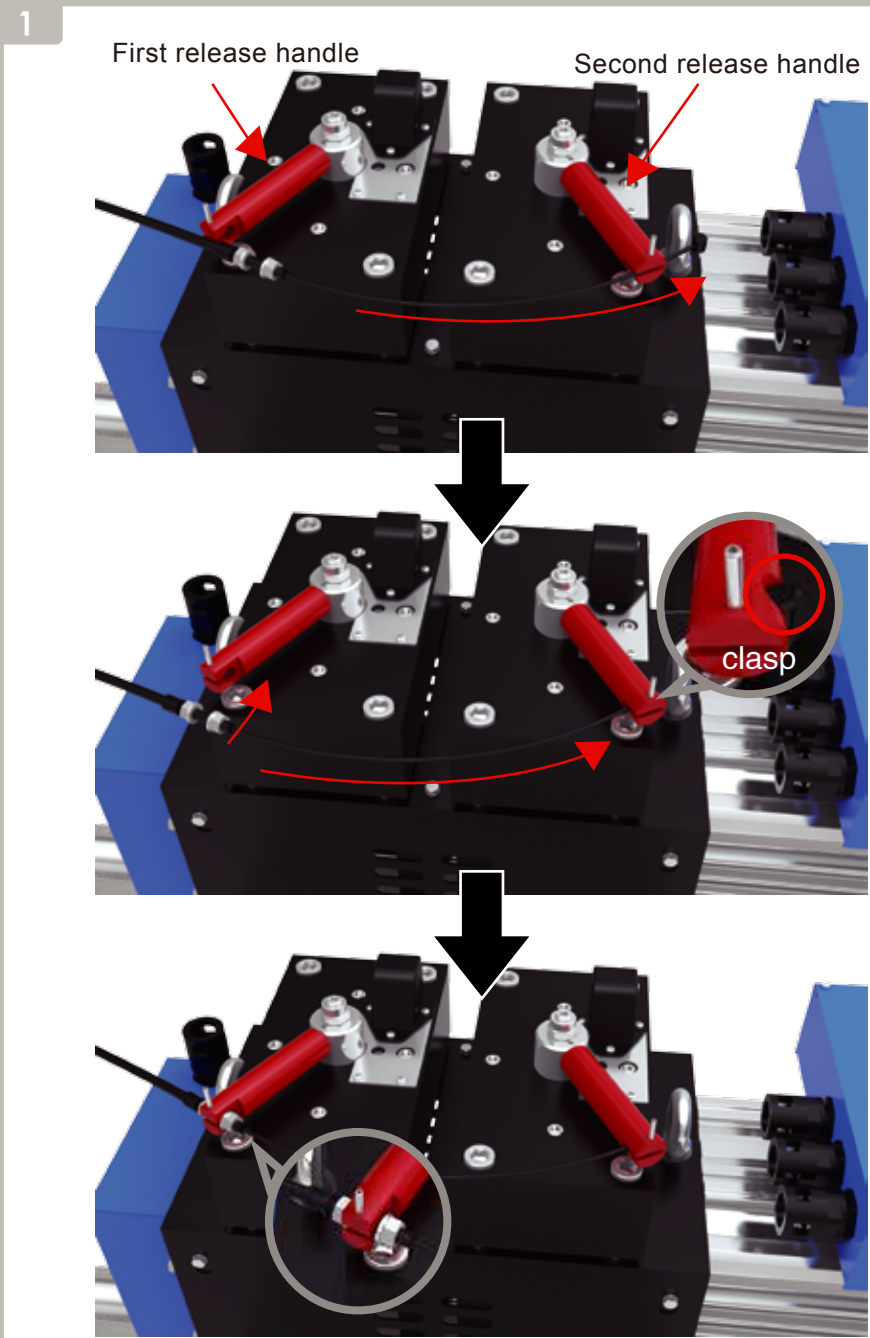
# Break release installation instruction

## Brake Release XP-BRBNXX

XP    BR    B2    80  
Series No    Brake Release    Belt Number    Wire Length Code

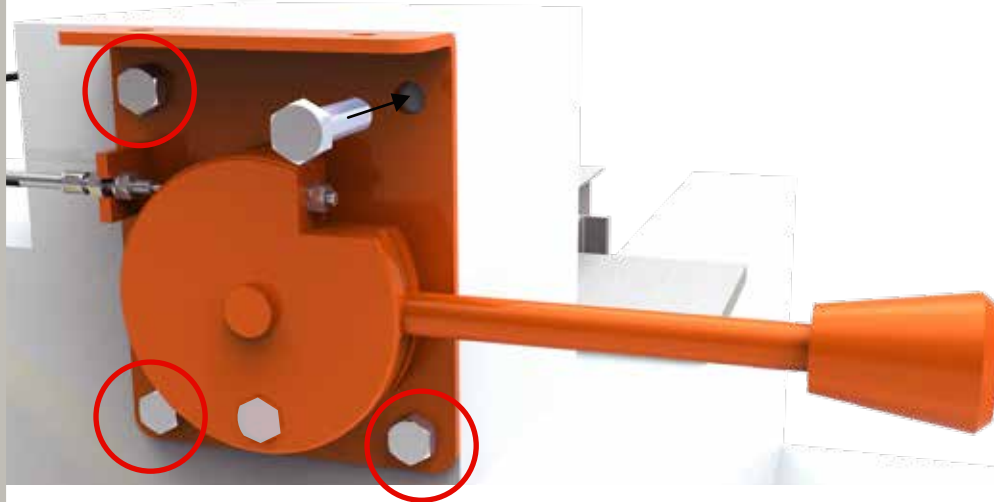


NO	Part No.	Belt number	Wire length (mm)
1	XP-BRB250	2	5000
2	XP-BRB350	3	5000
3	XP-BRB450	4	5000
4	XP-BRB550	5	5000
5	XP-BRB650	6	5000
6	XP-BRB280	2	8000
7	XP-BRB380	3	8000
8	XP-BRB480	4	8000
9	XP-BRB580	5	8000
10	XP-BRB680	6	8000



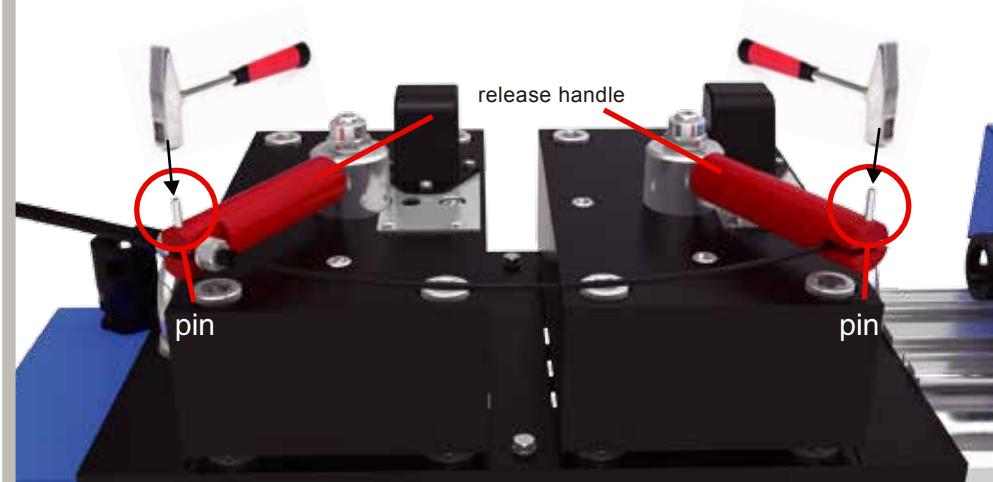
Step 1: put the wire into release handle, clasp and tight the nut cap.

2



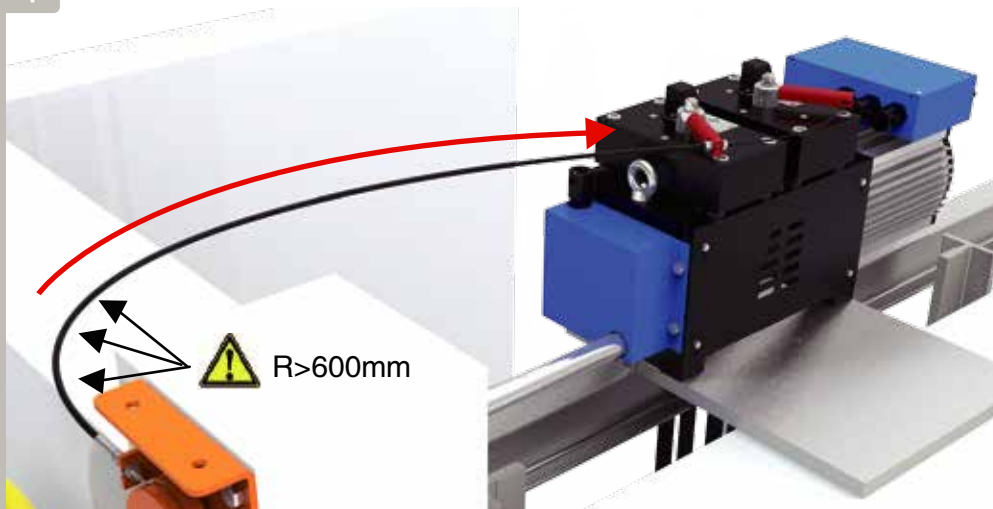
Step 2: Fix the main part of break release by M8 screw.

3



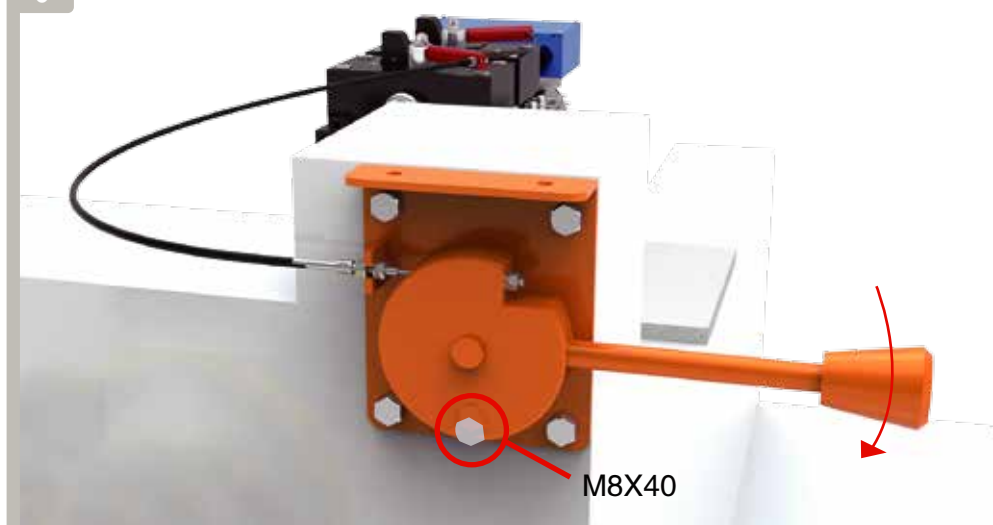
Step 3: Flattened the pin inside the release handle.

4



Step 4 : Min radius of wire should large than 600 mm, otherwise may unable to release the break, forcibly release the break may cause sever damage!

5



Step 5: when use the hand release, take out this M8\*40 bolt, please put back and tight the bot after finish the break release.