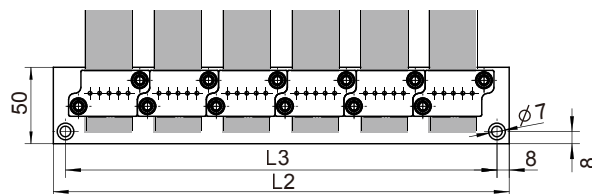
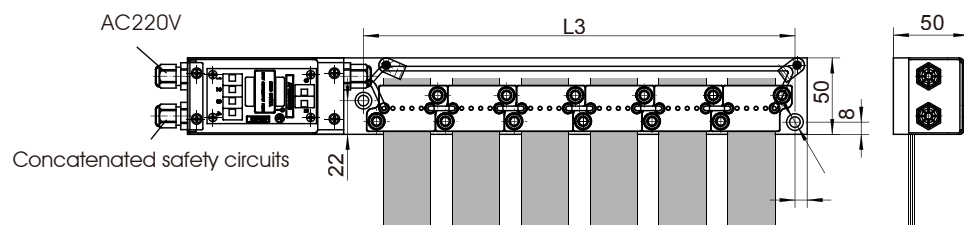
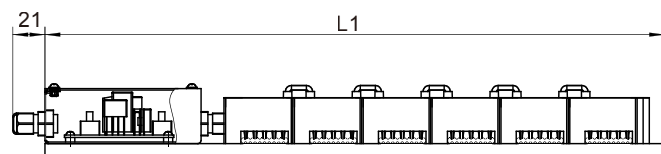


Belt Breaking Detect

XP - D30CX

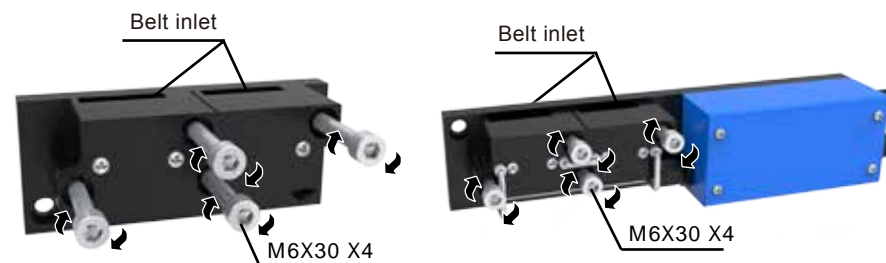
XP - D 30 C 6
 Series No Belt Breaking Detect Belt Width Short circuit blade + test blade + junction box Belt Number



PART NO.	Name	Belt No	L1	L2	L3
XP-D30C2	2 Belt Broken Detect	2	225	118	102
XP-D30C3	3 Belt Broken Detect	3	270	163	147
XP-D30C4	4 Belt Broken Detect	4	315	208	192
XP-D30C5	5 Belt Broken Detect	5	360	253	237
XP-D30C6	6 Belt Broken Detect	6	405	298	282

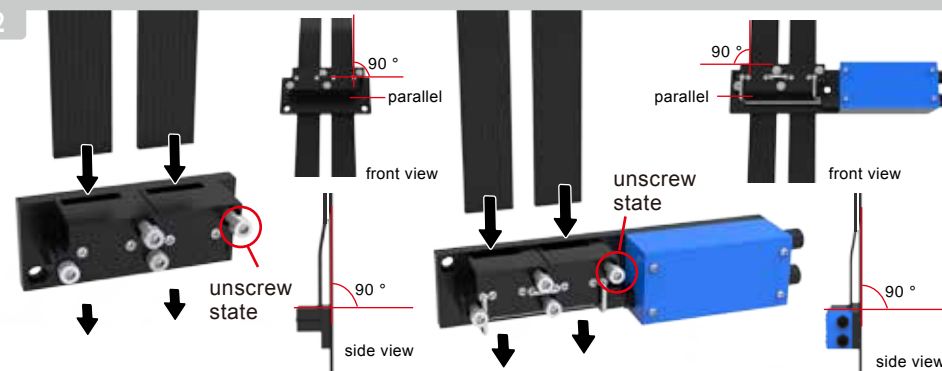
Installation Instruction

1



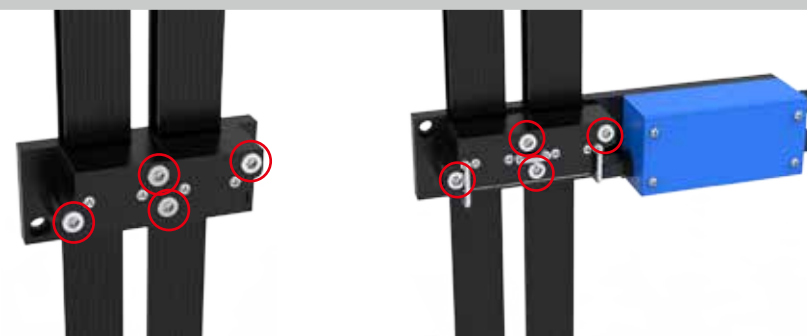
Step 1: Loose all inner hexagon screw M6*30, about one round.

2



Step 2; when 2 belt length large difference, we suggest cut the longer belt to the same, ensure cleanliness.

3



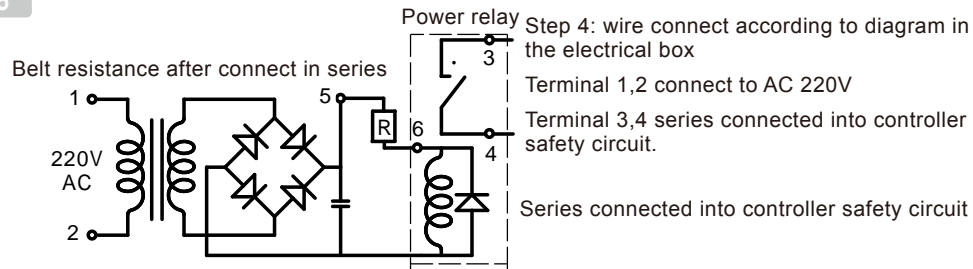
Step3: screw up inner hexagon screw M6*30.

4



Step 4: open electrical box, check if terminal 5,6 are connected, if not, repeat step 3, screw up each M6*30, until terminal 5,6 to be connected.

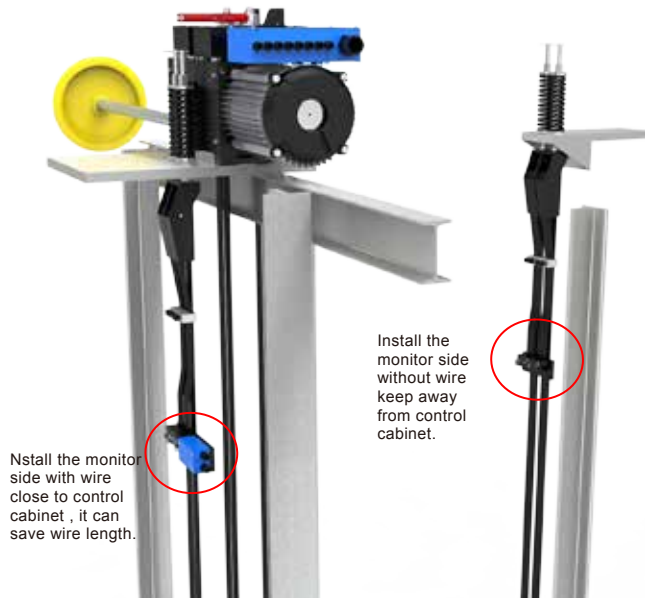
5



Note:

1. Install the monitor side with wire close to control cabinet, it can save wire length.

2. This device have installation hole, after installation, should fix it into appropriate position. It is allowed to be hang on the shaft, but should ensure elevator normal operation.



Wire Monitor side



Short Circuit Side

