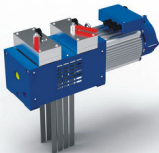
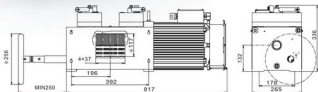
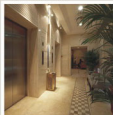


passenger elevator purpose tractor



GDB-132-800

Load: 800kg
Voltage: 380V
Suspension: 2:1
Center height: 132mm
Item weight: 170kg
Max. static load: 3000kg
Brake: DC198V 2+0.38A
DC110V 2+0.67A



Spec.	Load Kg	Lift speed m/s	Voltage V	Power Kw	Current A	Frequency Hz	Speed r/min	Torque N.m	Sheave dia. mm	Traction belt dia. in	INS. class	IP code	Weight Kg	Cooling type	Brake
GDB132-800-10-34	800	1	380	5.4	12	32.6	328	158	117	4	F	IP44	170	Fan cooling	block
GDB132-800-16-34	800	1.6	380	8.6	19	52.2	522	158	117	4	F	IP44	170	Fan cooling	block
GDB132-800-20-34	800	2	380	10.7	23.8	65.3	653	158	117	4	F	IP44	170	Fan cooling	block

this tractor need to use purposed traction belt,belt lock, guide pulley